



# 450Mbps High Power Wireless N Router

Boosted Coverage,  
Breaks Through Walls

TL-WR941HP



450Mbps



9dBi Antennas

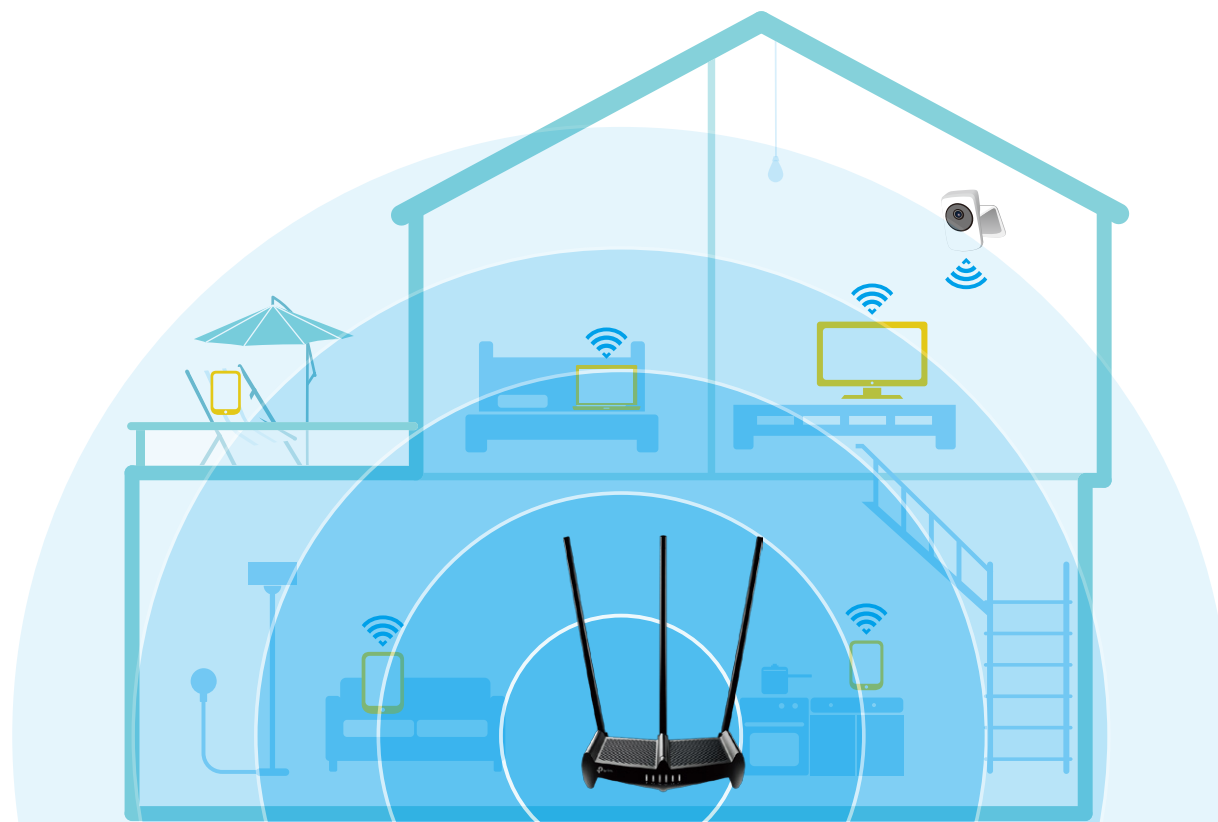


Maximum Range

# Highlights

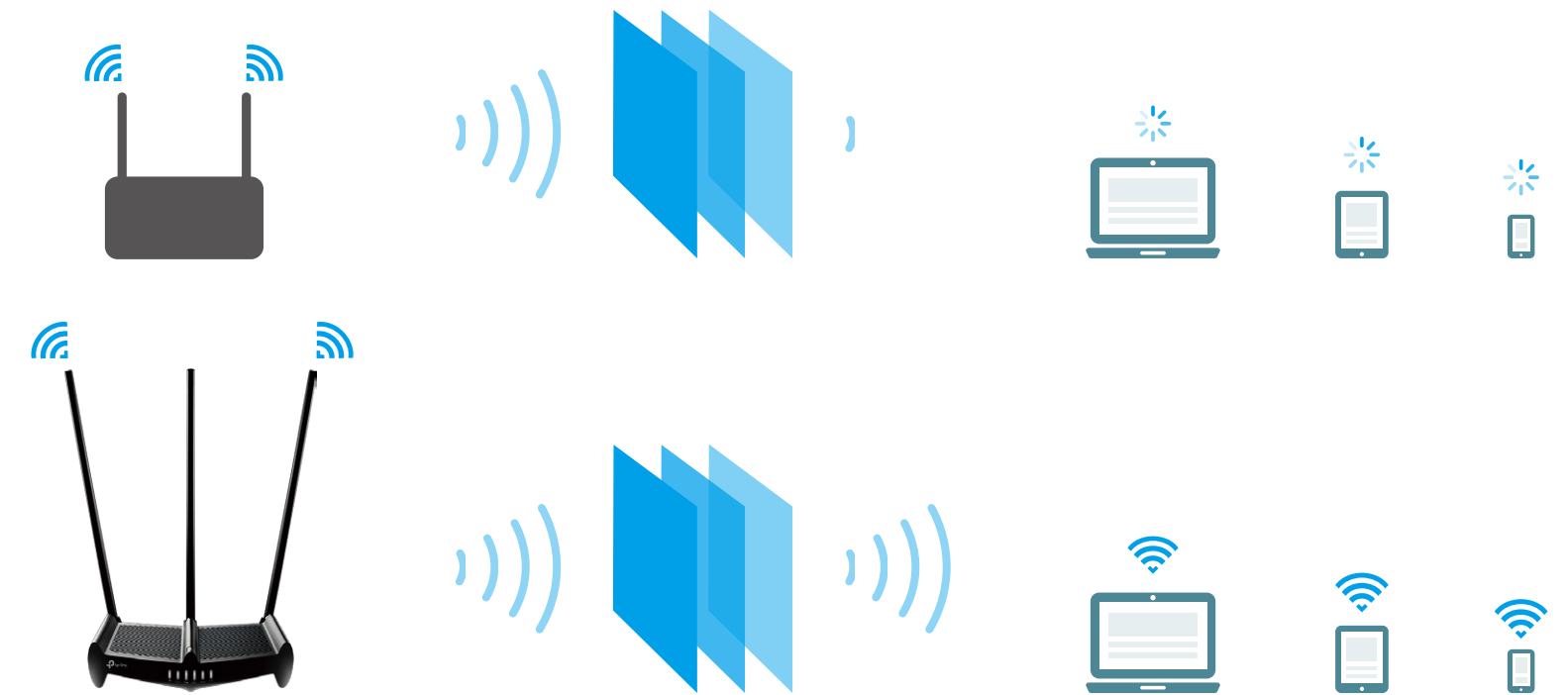
## Superior Coverage

An array of high-powered features provides wireless coverage for areas of up to 10,000 square feet.



## Wall-Breaking Wi-Fi

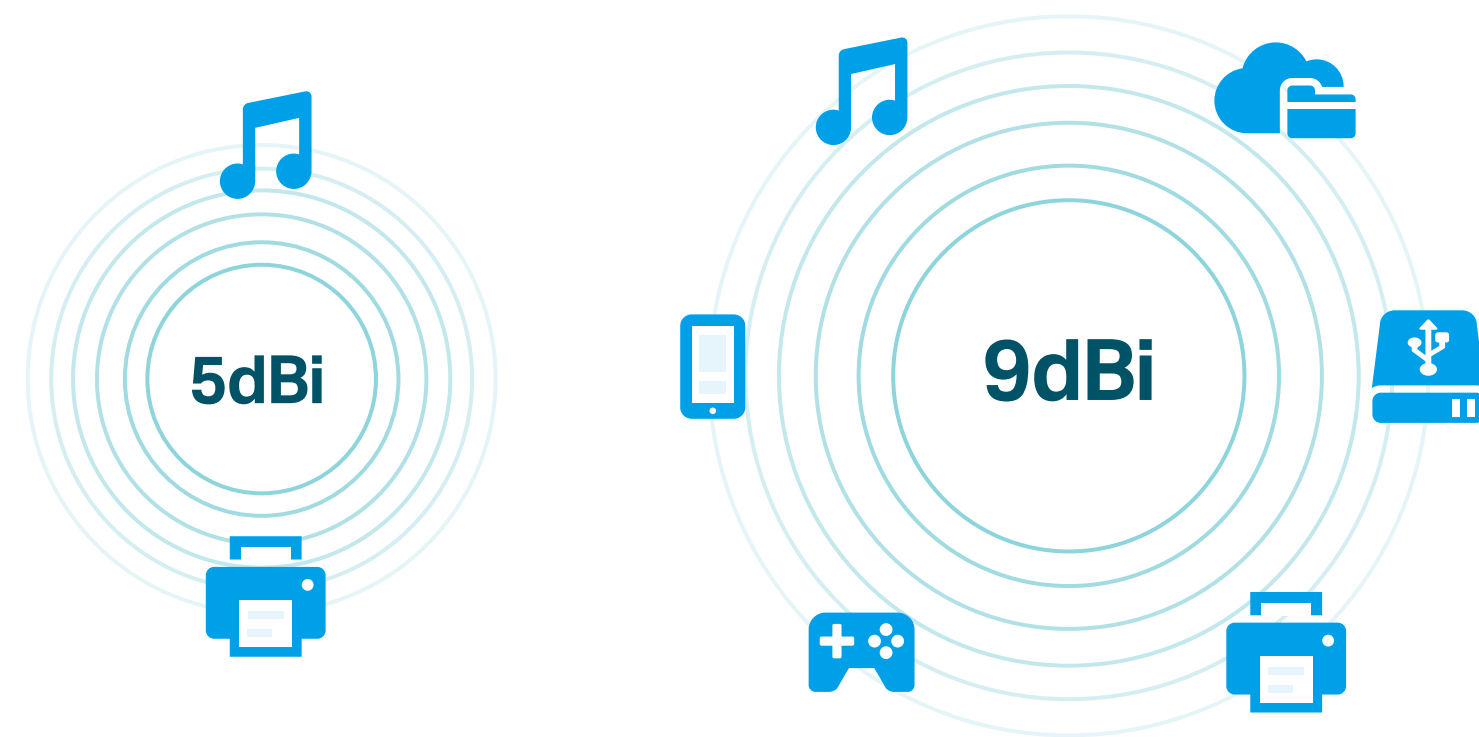
The supercharged wireless signal cuts through walls and other physical barriers, eliminating dead zones for a worry-free Wi-Fi network.



# Highlights

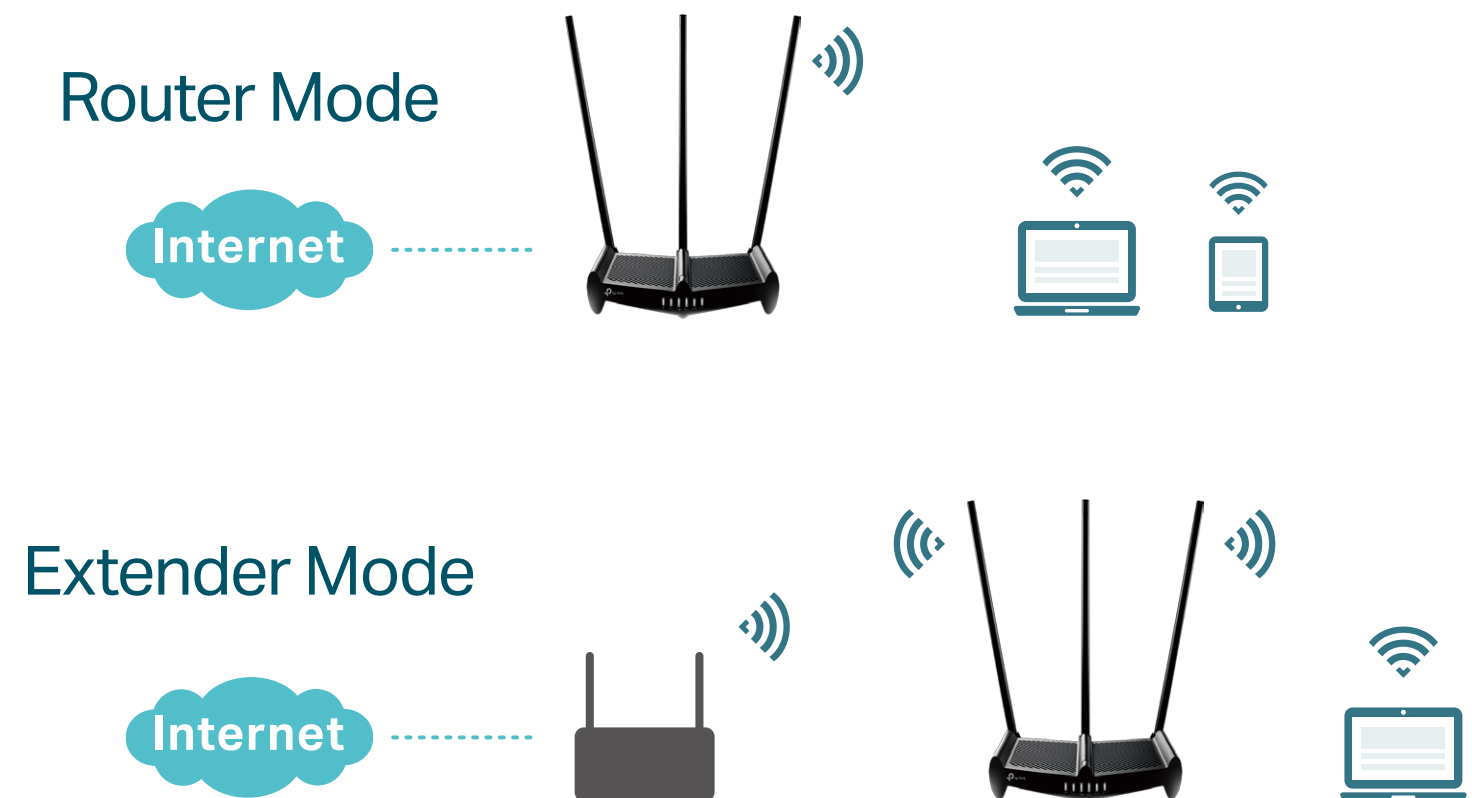
## High-Gain Stability

Three 9dBi antennas make stable connections for reliable Wi-Fi to all your devices.



## Tap into Multi-Mode

The RE Button lets you effortlessly switch between router and extender modes. Access point mode is also available from the web utility or Tether App.

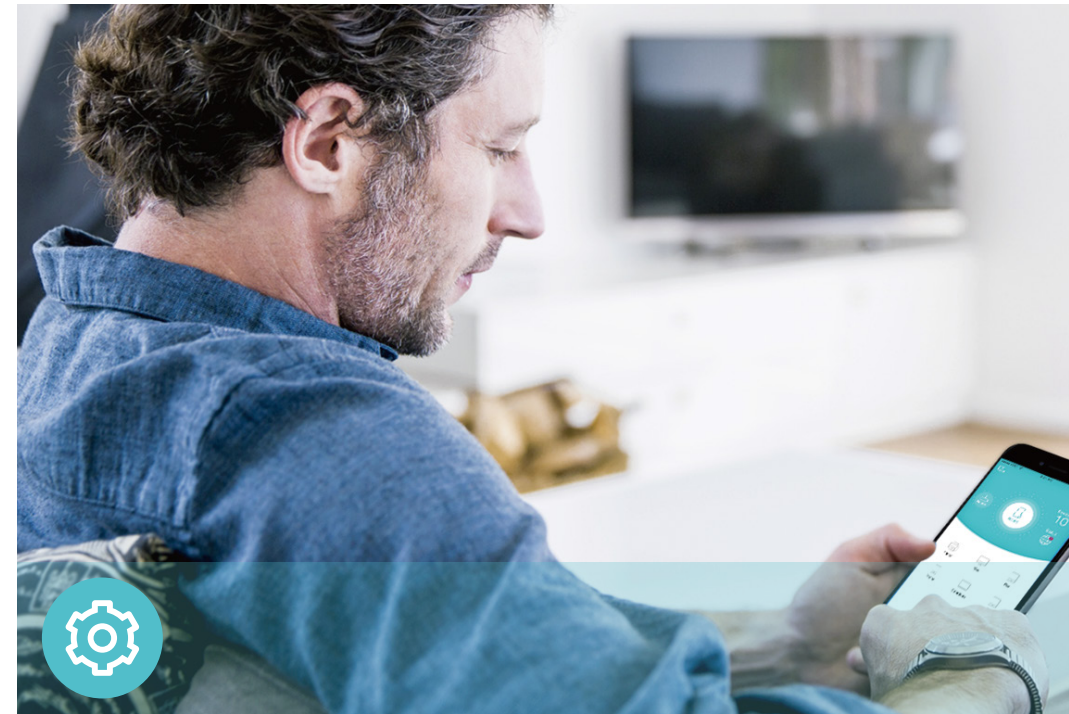


# Features



## Reliability

- **Wireless N Speed** – 450Mbps Wi-Fi speed meets your daily internet needs
- **802.11n** – Backward compatible with 802.11b/g products
- **Easy Bandwidth Management**– QoS allocates necessary speed of each connected device to ensure quality of multimedia streaming



## Ease of Use

- **Intuitive Web UI** – Ensures quick and simple Installation without hassle
- **Fast Encryption** – One-touch WPA wireless security encryption with the WPS button
- **Hassle-free Management with Tether App** – Network management is made easy with the TP-Link Tether App, available on any Android and iOS device



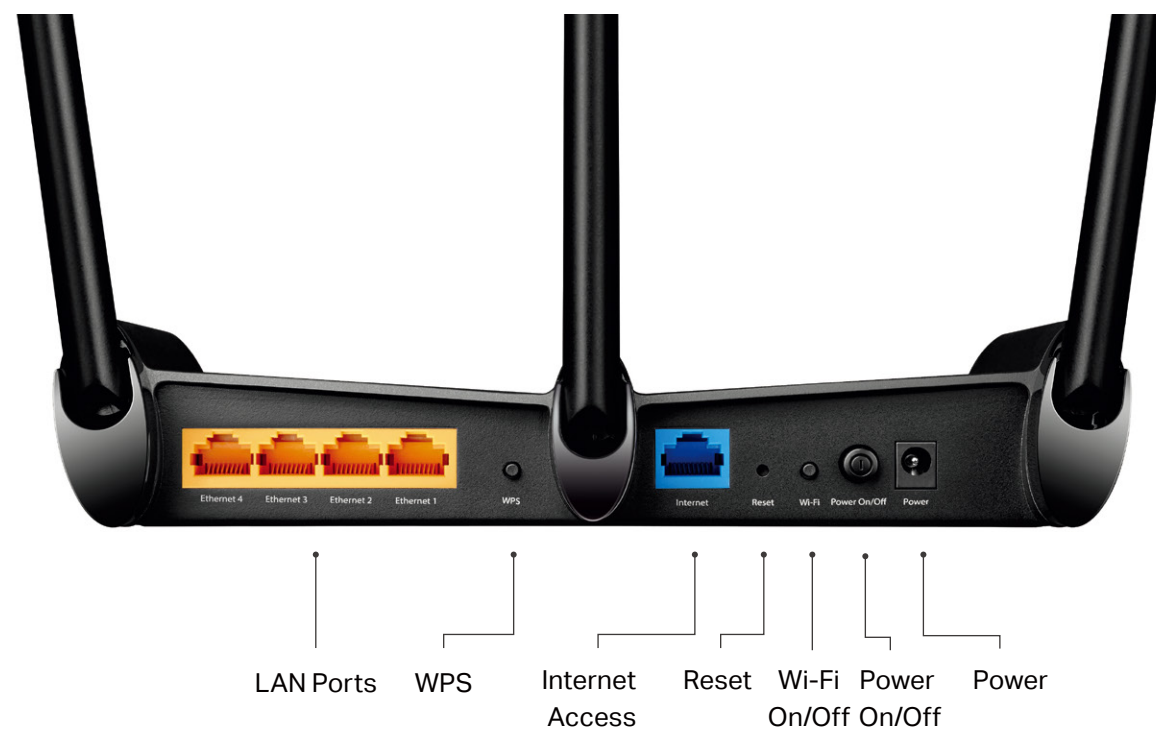
## Security

- **Guest Network** – Keeps your main network secure by creating a separate network for friends and visitors
- **Access Control** – Establishes a whitelist or blacklist to allow or restrict certain devices to access the internet
- **Parental Controls** – Restricts internet access time and contents for children devices
- **Encryptions for Secure Network** – WPA-PSK and WPA2-PSK encryptions provide active protection against security threats

# Specifications

## Hardware

- Ethernet Ports: 4 10/100Mbps LAN Ports, 1 10/100Mbps WAN Port
- Buttons: Power On/Off Button, Wi-Fi On/Off Button, Reset Button, WPS Button, RE Button
- Antennas: Three 9dBi Detachable Antennas
- External Power Supply: 12V/1.5A
- Dimensions (W x D x H): 9.0× 7.5×1.9 in. (228×190×48mm)



## Wireless

- Wireless Standards: IEEE 802.11b/g/n
- Frequency: 2.4GHz
- Signal Rate: 450Mbps
- Transmit Power: CE: < 20dBm, FCC: <30dBm
- Reception Sensitivity:
  - 2.4GHz:
    - 450M: -71dBm@10% PER
    - 216M: -74dBm@10% PER
    - 130M: -77dBm@10% PER
    - 54M: -77dBm@10% PER
    - 11M: -91dBm@8% PER
    - 6M: -89dBm@10% PER
    - 1M: -97dBm@8% PER
- Wireless Function: Enable/Disable Wireless Radio, WDS Bridge, WMM, Wireless Statistics
- Wireless Security: 64/128-bit WEP, WPA/WPA2, WPA-PSK/WPA2-PSK encryptions

# Specifications

## Software

- Quality of Service: WMM, Bandwidth Control
- WAN Type: Dynamic IP/Static IP/PPPoE/PPTP(Dual Access)/L2TP(Dual Access)/BigPond
- Management: Access Control, Local Management, Remote Management
- DHCP: Server, DHCP Client List, Address Reservation
- Port Forwarding: Virtual Server, Port Triggering, UPnP, DMZ
- Dynamic DNS: DynDns, NO-IP
- Access Control: Parental Controls, Local Management Control, Host List, White List, Black List
- Firewall Security: DoS, SPI Firewall, IP and MAC Address Binding
- Protocols: IPv4, IPv6
- Guest Network: 2.4GHz guest network

## Others

- Certification:  
CE, FCC, RoHS
- System Requirements:  
Microsoft Windows 98SE/NT/2000/XP/Vista™/7/8/8.1/10, MAC OS, NetWare, UNIX or Linux  
  
Internet Explorer 11, Firefox 12.0, Chrome 20.0, Safari 4.0, or other Java-enabled browser
- Environment:  
Operating Temperature: 0°C~40°C (32°F ~104°F)  
Storage Temperature: -40°C~70°C (-40°F ~158°F)  
  
Operating Humidity: 10%~90% non-condensing  
Storage Humidity: 5%~90% non-condensing
- Package Contents  
High Power Wireless Router TL-WR941HP  
Power Supply Unit  
Ethernet Cable  
Quick Installation Guide



For more information, please visit

<http://www.tp-link.com/en/products/details/TL-WR941HP.html>

or scan the QR code left

Attention: This device may only be used indoors in all EU member states and EFTA countries.

Specifications are subject to change without notice. TP-Link is a registered trademark of TP-Link Technologies Co., Ltd. Other brands and product names are trademarks or registered trademarks of their respective holders. Copyright ©2017 TP-Link Technologies Co., Ltd. All rights reserved.

TP-Link Technologies Co., Ltd.

Building 24 (floors 1, 3, 4, 5) and 28 (floors 1-4) Central Science and Technology Park, Shennan Rd, Nanshan, Shenzhen, China

[www.tp-link.com](http://www.tp-link.com)

[www.tp-link.com](http://www.tp-link.com)

TP-Link 450Mbps High Power Wireless N Router TL-WR941HP